

ZyXEL



Your Personal Cloud for a Better Social Life

2 Bay

- Zero-configuration design for remote access from ZyXEL Drive
- Easy to use mobile group sharing from your own personal cloud
- User portal as device status dashboard
- Easy to setup, maintain and organize
- RAID 1 read/write performance at 105/105.8 MB/s

Ever wanted to share drive space with a certain community in your social circle? Wouldn't it be great if they can easily access the media you're sharing via their own mobile devices? Now you can with ZyXEL NAS326: instantly share hundreds of pictures and video clips you took with friends and family on vacations with the ZyXEL Drive mobile app!

Need to access your memorable moments of your social groups away from home? The ZyXEL Drive mobile app enables you to freely access files on the ZyXEL NAS326 whenever and wherever you are—as long as you're connected to the Internet.

Benefits

Fast performance for productivity

The ZyXEL NAS326 is equipped with a high performance processor to provide up to 105 MB/sec reading data 105 MB/sec in writing data. Instantly retrieve data from your mobile devices, backup files, and stream UHD 4K video contents without performance stutter.

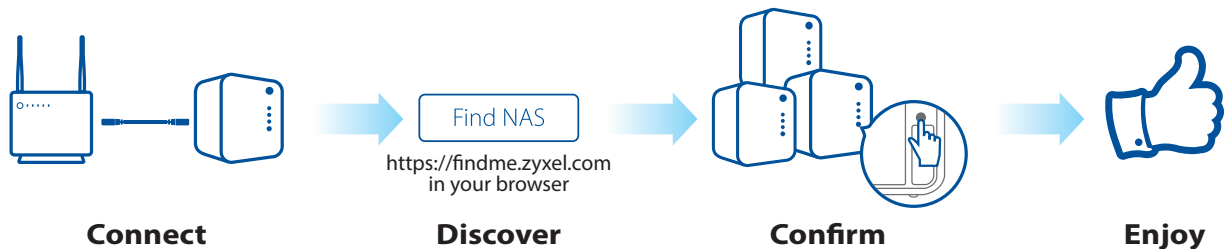


NAS326
2-Bay Personal
Cloud Storage



Start using ZyXEL NAS instantly with help from FindMe

With ZyXEL FindMe, it takes only four easy steps to discover your NAS on the home network and to get you in control within 15 seconds! There's no need to install a NAS utility and you save ten minutes performing the otherwise very complicated installation process!



Instantly access and share your files wherever you are

The ZyXEL Drive mobile app gives you the freedom to access and share files from your NAS326 wherever you are. Rest assured that the files are securely shared through private peer-to-peer (P2P) connections to only those with your permission.



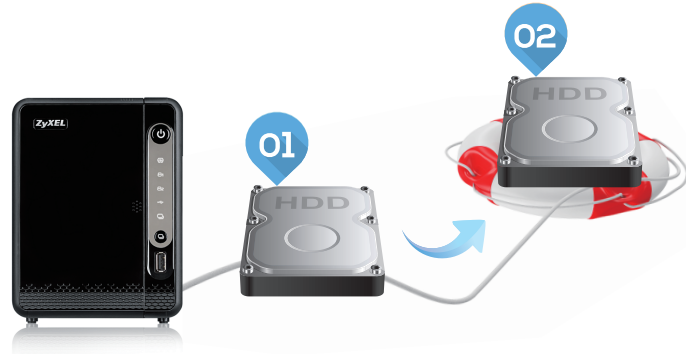
Create a shared cloud space for people without NAS

Provide your cloud space for your friends or family members when you share a folder from ZyXEL NAS326 with the ZyXEL Drive mobile app. Your friends and family members don't need to purchase an additional NAS—just install the ZyXEL Drive mobile app on their favorite mobile devices.



Protecting your data from accidents

The ZyXEL NAS326 comes with RAID 1 capability that clone contents from one drive to another; in case one of the drives is damaged or corrupted, you still have another drive to restore or use from.



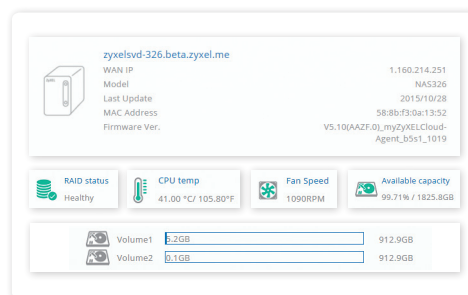
Get up and running quickly with our easy-to-use interface

ZyXEL NSM 5.1 intelligent desktop provides a rich feature set of tools with an easy-to-understand GUI design to get your things done quickly. The multitasking capability through multi-window interface enables you to quickly get applications up and running.



Check NAS while you're away

Do you have several ZyXEL NAS and want to quickly check their health status? Get an instant glance of their health status by visiting the myZyXELcloud Web portal—even you're away from home, or you can also install it in someone's home. With the myZyXELcloud Web portal, you get a clear dashboard to see if anything needs attention.



Stream multimedia contents to Big TV

Bring your favorite multimedia files on the ZyXEL NAS326 to the big screen. With ZyXEL zCloud app v2.2, you can play your favorite videos, music or photos on the big screen with TV streaming devices such as Apple TV, Google Chromecast, Roku 3, Amazon Fire TV; or with Samsung and LG Smart TV.



More Features

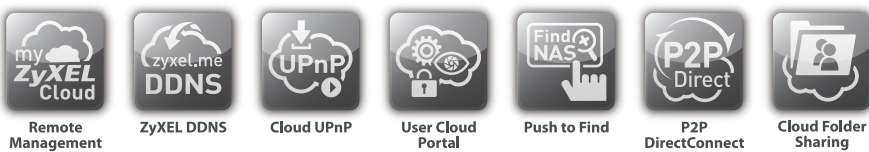
APPS



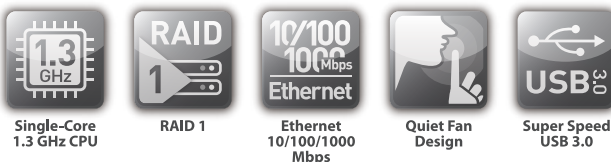
NAS OS



myZyXELcloud



NAS326



Specifications

System Specifications

Networking

- Network protocol:
 - CIFS/SMB for Windows
 - NFS for Linux/Unix
 - AFP for Mac
 - DHCP client
 - PPPoE
 - Network Time Protocol (NTP)
 - iSCSI
- Network applications:
 - Media server:
 - Twonky media server with DLNA 1.5 and UPnP AV
 - iTunes server
 - Logitech media server
 - Photo album server
 - Web service:
 - WebDAV
 - FTP server
 - phpMyAdmin/MySQL/PHP
 - RSS client & server
 - Print server (CIFS)
 - Remote access support (DyDNS)
 - iOS and Android application:
 - ZyXEL Drive, zCloud, ownCloud
 - Network application management:
 - User & group management
 - Package management for setting up applications
 - Network security:
 - Support HTTPS and FTPES (FTP over explicit TLS/SSL)
 - Encrypted NAS to NAS remote replication
 - Encrypted NAS to external disk archive backup

Data Management

- Backup support:
 - One-touch copy/sync button for external USB capable devices backup
 - Backup planner:
 - Instant/Scheduled backup
 - NAS to NAS synchronization/archive backup
 - Rsync
 - NAS to external USB hard disk backup
 - Google Drive, Dropbox, Memopal, ownCloud, SynBackupfree, Cyberduck and NetDrive support
 - Apple Time Machine support
- Download/Upload support:
 - Auto-download from FTP/HTTP/P2P download service (Torrent file supported)
 - Scheduled download

- Auto-upload photos and videos to YouTube/Flickr/FTP server
- File system support:
 - Internal HDD: EXT4
 - External HDD: NTFS, EXT2, EXT3, EXT4, FAT32, HFS+ (read only), exFAT

System Management

- JBOD, RAID 0/1
- Online firmware upgrade
- Self-Monitoring Analysis and Reporting Technology (S.M.A.R.T.)

Power and Thermal Management

- Power control:
 - Internal disk hibernation support
 - Scheduled power on/off/reboot
 - Wake-on-LAN support
 - System automatically resume after power outage
- APC USB UPS monitoring and auto shutdown
- Thermal management:
 - Smart fan speed control
 - High temperature alert/buzzer
 - Auto shutdown while high temperature

Minimum System Requirements

- OS for utility: Windows XP onward, Mac OS X 10.5 onward
- Browser: IE 11+, Firefox 20+, Google Chrome 37+, Safari 5+

Application Package Center

- myZyXELcloud service:
 - myZyXELcloud agent
- Cloud application:
 - ownCloud (Cloud synchronization server)
 - Google Drive
 - Dropbox
 - Memopal
- Download management:
 - NZBGet (NZB file download management supported)
 - Transmission (Torrent file supported)
 - pyLoad (Download manager for many one-click-hosting sites)
- Additional:
 - Gallery (The web-based application allows your NAS to host pictures)
 - WordPress (Blogging tool and content management system)
 - Tftp
 - NFS
 - Logitech media server (Stream audio system)
 - PHP-MySQL-phpMyAdmin (MySQL administration tool)

Hardware Specifications

- CPU: Marvell Armada 380 1.3 GHz
- Memory: DDR3 512 MB
- Two 2.5" or 3.5" SATA II hard disk interface supported up to 12 TB (6 TB x2)
- One Gigabit Ethernet RJ-45 connector
- Two USB 3.0 ports
- One USB 2.0 port
- Buttons:
 - Power button
 - Copy/Sync button
 - Reset button
- Smart fan design
- Power consumption:
 - Access mode: 28 watt (full loading: Internal HDD x2, External HDD x3)
 - Hard disk spin-down mode: 5.5 watt
- Power:
 - Input: 100 - 240 V AC, 50/60 Hz
 - Output: 12 V DC, 5 A

Physical Specifications

- Item dimensions (WxDxH):
207 x 164 x 123 mm (8.15" x 6.46" x 4.84")
- Item weight: 1,257 g (2.77 lb.)
- Packing dimensions (WxDxH):
280 x 173 x 275 mm (11.02" x 6.81" x 10.82")
- Packing weight: 2,260 g (4.99 lb.)

Environmental Specifications

Operating Environment

- Temperature: 0°C to 40°C (32°F to 104°F)
- Humidity: 10% to 95% (Non-condensing)

Storage Environment

- Temperature: -30°C to 70°C (-22°F to 158°F)
- Humidity: 10% to 95% (Non-condensing)

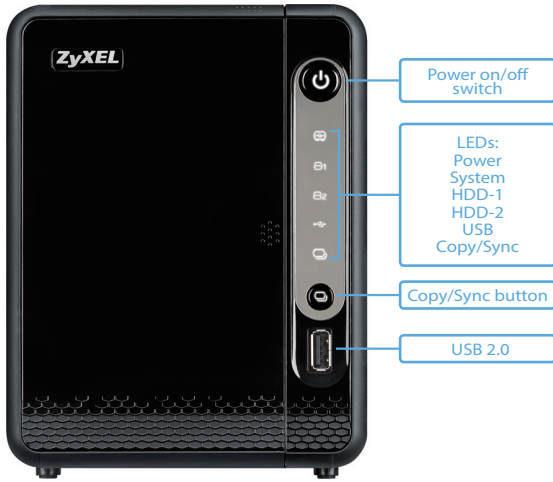
Certification

- Safety: CE LVD, BSMI
- EMC: CE, FCC class B, C-Tick, BSMI
- Others: DLNA 1.5, UPnP

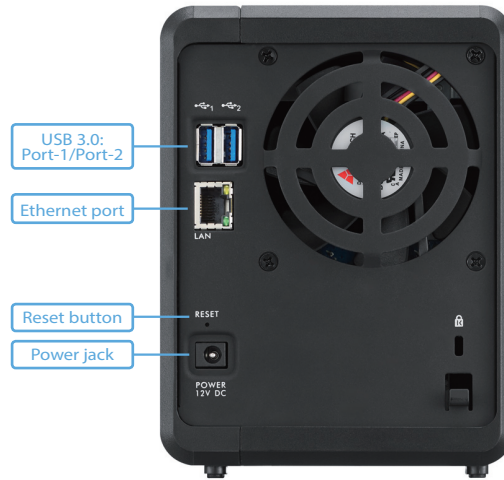
Package Contents

- Network storage device (Hard disks not included)
- Power supply and power cord
- Ethernet cable
- FindMe note
- Quick start guide
- Warranty card
- Hardware bag
- Accessory pack

Front Panel



Rear Panel



For more product information, visit us on the web at www.ZyXEL.com



Copyright © 2015 ZyXEL Communications Corp. All rights reserved. ZyXEL, ZyXEL logo are registered trademarks of ZyXEL Communications Corp. All other brands, product names, or trademarks mentioned are the property of their respective owners. All specifications are subject to change without notice.

