



# 450Mbps Wireless N Gigabit Router

450Mbps, the Fastest 11N  
Gigabit Router

TL-WR1043N



450Mbps  
Wireless Speed



5dBi Antennas



Gigabit Ports

# Highlights

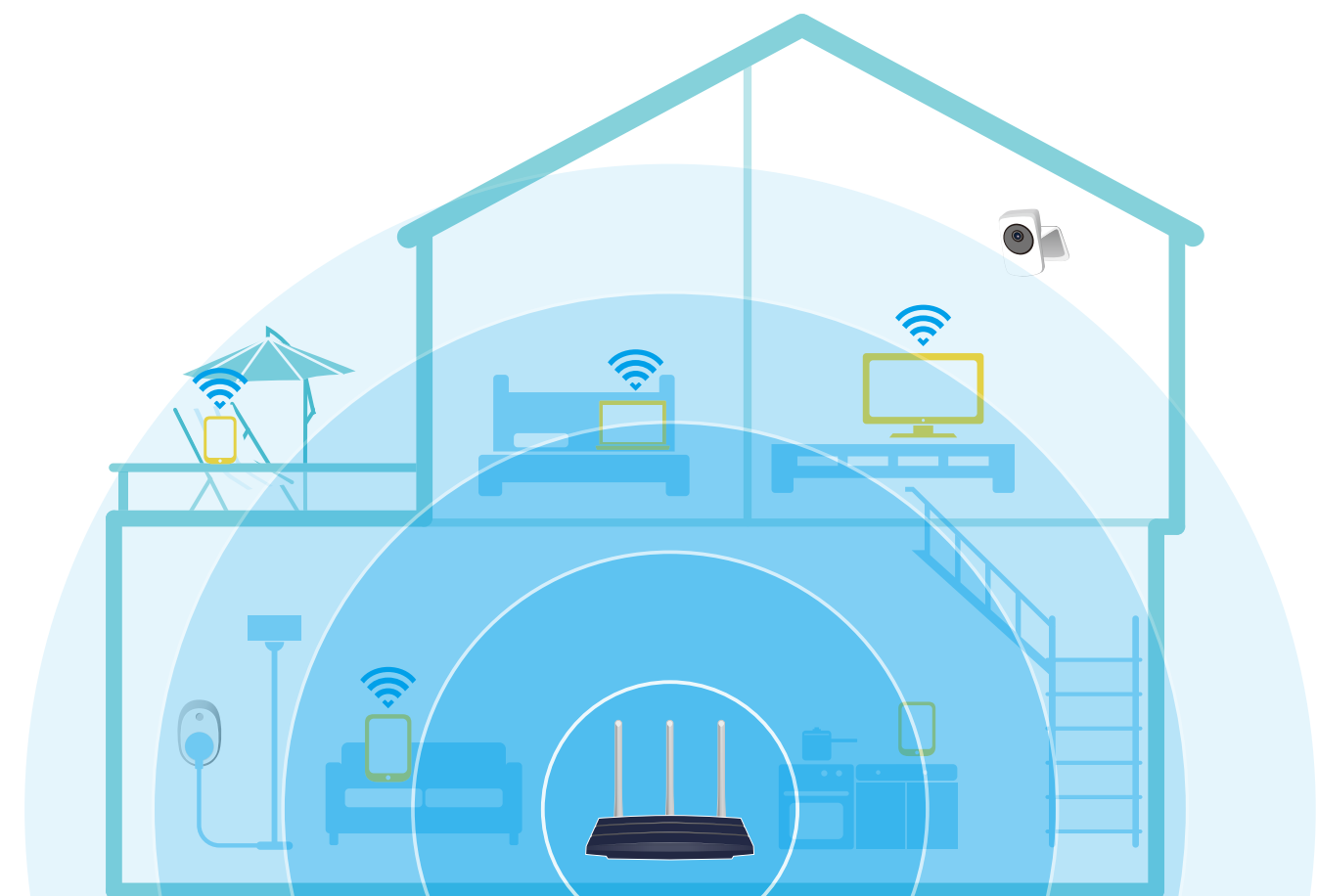
## Wireless Router with the Power of Gigabit Wired

Enjoy reliable Wi-Fi with the TL-WR1043N. The Wireless N router creates strong Wi-Fi connections for devices throughout your home. Gigabit Ethernet ports create high-speed wired connections for lag-free gaming and streaming.



## Fully extended coverage

3 external 5dBi antennas combined with higher quality antenna technology provide users with larger wireless coverage and stronger wireless signal intensity from anywhere in your large home or office.



# Features



## Reliability

- **Wireless N Speed** – 450Mbps Wi-Fi speed meets your daily internet needs
- **802.11 n** – Backward compatible with 802.11 b/g products
- **Easy Bandwidth Management** – Bandwidth Control allocates necessary speed of each connected device to ensure quality of multimedia streaming
- **IP QoS** – Advanced QoS automatically recognizes & prioritizes streaming & gaming applications



## Ease of Use

- **Intuitive Web UI**– Ensures quick and simple installation without hassle
- **Fast Encryption** – One-touch WPA wireless security encryption with the WPS button
- **Wi-Fi On/Off** – Turn On/Off wireless radio using the Wi-Fi On/Off button
- **Power On/Off** – Conveniently power on or off your router as required
- **Hassle-free Management with Tether App** – Network management is made easy with the TP-Link Tether App, available on any Android or iOS device



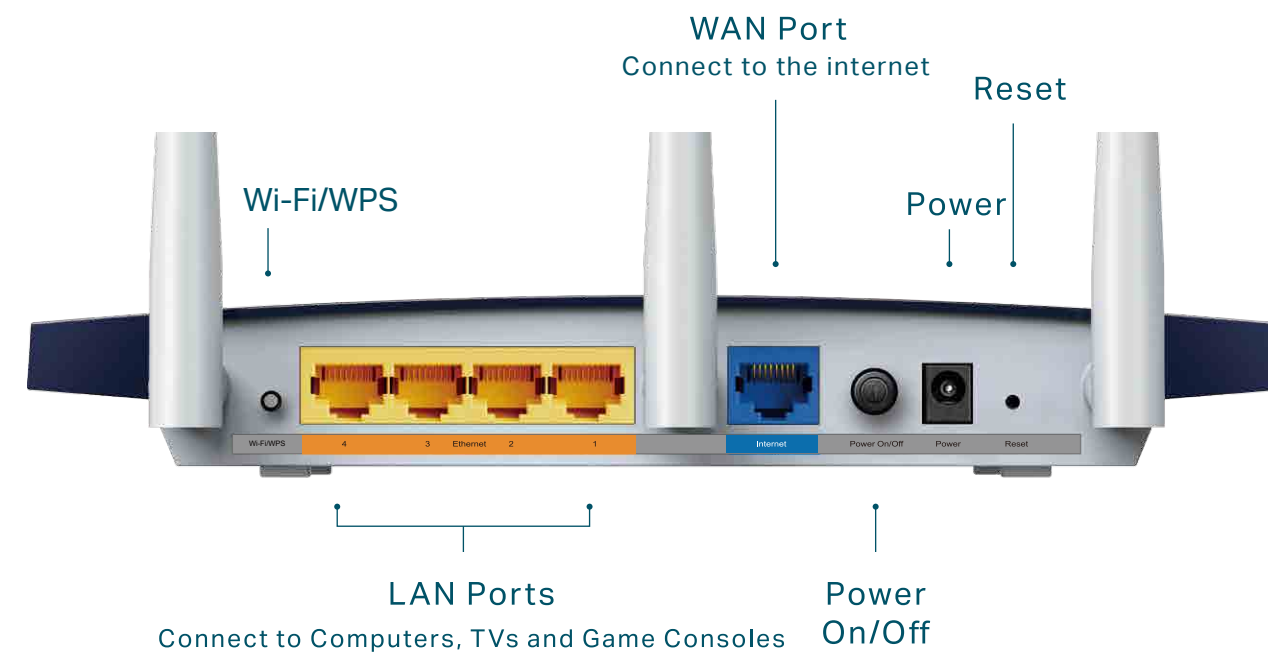
## Security

- **Guest Network** – Keep your main network secure by creating a separate network for friends and visitors
- **Access Control** – Establish a whitelist or blacklist to allow or block certain devices from accessing the internet
- **Parental Controls** – Manage when and how connected devices can access the internet
- **Encryptions for Secure Network** – WPA-PSK/WPA2- PSK encryptions provide active protection against security threats

# Specifications

## Hardware

- Ethernet Ports: 4 10/100/1000Mbps LAN Ports, 1 10/100/1000Mbps WAN Port
- Buttons: Reset Button, Power On/Off Button, Wi-Fi/WPS Button
- Antennas: 3 5dBi fixed Omni Directional Antennas (RP-SMA)
- External Power Supply: 9V DC / 0.85A
- Dimensions (W x D x H): 8.9 x 5.8 x 1.3in. (225 x 148 x 33mm)



## Wireless

- Wireless Standards: IEEE 802.11n, IEEE 802.11g, IEEE 802.11b
- Frequency: 2.4 ~ 2.4835GHz
- Signal Rate:
  - 11n: Up to 450Mbps(dynamic)
  - 11g: Up to 54Mbps(dynamic)
  - 11b: Up to 11Mbps(dynamic)
- Reception Sensitivity:
  - 270M: -68dBm@10% PER
  - 130M: -68dBm@10% PER
  - 108M: -68dBm@10% PER
  - 54M: -68dBm@10% PER
  - 11M: -85dBm@8% PER
  - 6M: -88dBm@10% PER
  - 1M: -90dBm@8% PER
- Wireless Function: Enable/Disable Wireless Radio, WDS Bridge, WMM, Wireless Statistics
- Wireless Security: WEP, WPA/WPA2, WPA-PSK/WPA-PSK2

# Specifications

## Software

- WAN Type: Dynamic IP, Static IP, PPPoE, PPTP(Dual Access), L2TP(Dual Access), Bigpond
- DHCP: Server, DHCP Client List, Address Reservation
- Quality of Service: WMM, Bandwidth Control
- Port Forwarding: Virtual Server, Port Triggering, UPnP, DMZ
- Dynamic DNS: DynDns, NO-IP
- Access Control: Parental Control, Local Management Control, Host list, Access Schedule, Rule Management
- Firewall Security: DoS, SPI Firewall, IP Address Filter/MAC Address Filter/Domain Filter, IP and MAC Address Binding
- Protocols: IPv4, IPv6
- Management: Access Control, Local Management, Remote Management
- Guest Network: 2.4GHz guest network

## Others

- Certification  
CE, FCC, RoHS, Wi-Fi
- System Requirements  
Microsoft Windows 10/8.1/8/7/Vista/XP/2000/NT/98SE, MAC OS, NetWare, UNIX or Linux  
Internet Explorer 11, Firefox 12.0, Chrome 20.0, Safari 4.0, or other Java-enabled browser  
Cable or DSL Modem  
Subscription with an internet service provider (for internet access)
- Environment  
Operating Temperature: 0°C~40°C (32°F ~104°F)  
Storage Temperature: -40°C~70°C (-40°F ~158°F)  
Operating Humidity: 10%~90% non-condensing  
Storage Humidity: 5%~90% non-condensing
- Package Contents  
450Mbps Wireless N Gigabit Router TL-WR1043N  
Power Adapter  
RJ-45 Ethernet Cable  
Quick Installation Guide



For more information, please visit

[http://www.tp-link.com/en/products/details/cat-9\\_TL-WR1043ND.html](http://www.tp-link.com/en/products/details/cat-9_TL-WR1043ND.html)

or scan the QR code left

Specifications are subject to change without notice. TP-Link is a registered trademark of TP-Link Technologies Co., Ltd. Other brands and product names are trademarks or registered trademarks of their respective holders. No part of the specifications may be reproduced in any form or by any means or used to make any derivative such as translation, transformation, or adaptation without permission from TP-Link Technologies Co., Ltd.

Maximum wireless speed of up to 450Mbps is the theoretical data rate derived from IEEE standard 802.11 specifications. Actual data throughput and wireless coverage will vary due to network conditions and environmental factors including volume of network traffic, building materials and construction, network overhead, actual data throughput rate, and wireless coverage.

[www.tp-link.com](http://www.tp-link.com)

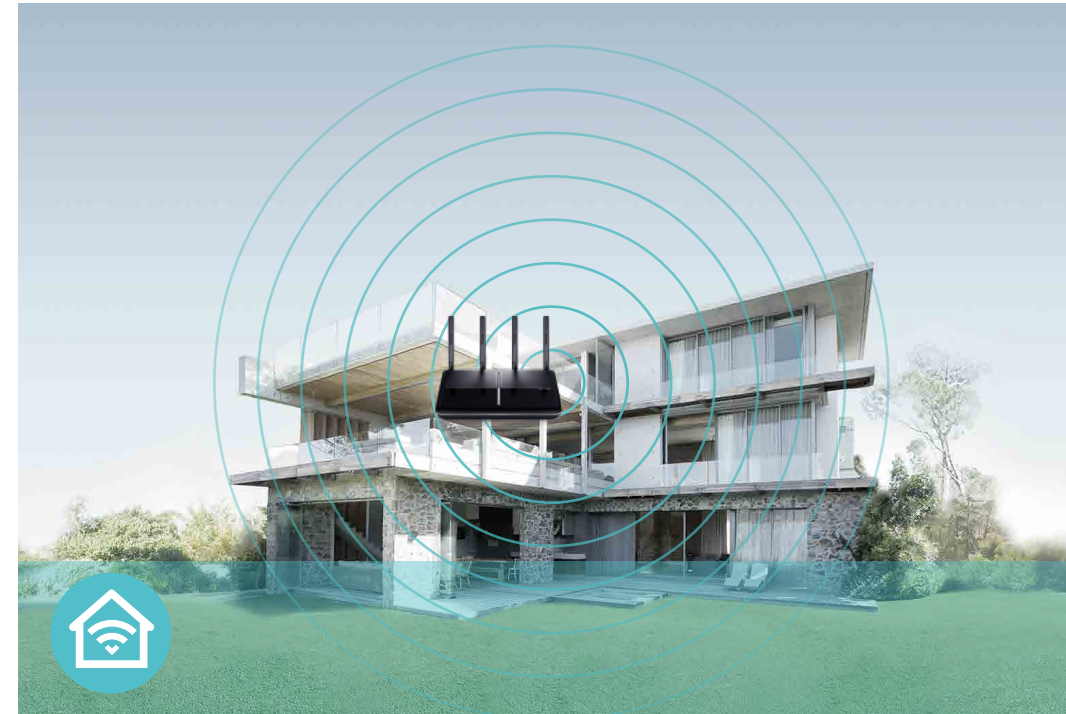
TP-Link 450Mbps Wireless N Gigabit Router TL-WR1043N

# Features



## Speed

- Blazing Fast Wireless Speed – Wireless speeds up to 450Mbps
- Gigabit Wired Speed – All Gigabit ports ensure ultrafast data transfer speeds



## Wi-Fi Range

- Ultimate Range & Reliable Wi-Fi – High-powered amplifiers ensure continuous Wi-Fi signal to all your devices while boosting widespread coverage throughout your very large home