

ZyXEL



Your First MU-MIMO Home Router

AC/2200

- “eaZy123” mobile-friendly setup wizard
- Gigabit-class wireless performance with MU-MIMO, AC2200
- 6 internal antennas with outstanding performance comparable with external antennas
- ZyXEL ONE Connect discovers home connectivity and activities
- Usage Monitor monitors your broadband bandwidth
- Bandwidth allocated to where needed with StreamBoost™
- 2 USB ports for a printer and a file sharing device at the same time
- Wi-Fi on/off switch avoids wireless interference when not in use
- Turn LED on or off with a switch when needed

The ZyXEL NBG6815 is your first Multi User MIMO (MU-MIMO) home router that fits in your home interior design with its chic look, and it upgrades your home network with MU-MIMO technology at the same time. It also supports Gigabit-class wired connection, wireless speeds of up to 2200 Mbps and two USB ports. The NBG6815 is perfect for your home entertainment setup: you can share photos, music and videos smoothly on your home network, and you can inspect or manage home network easily with ZyXEL ONE Connect APP and Usage Monitor.

Benefits

MU-MIMO provides performance up to twice of the Wi-Fi than SU-MIMO

The latest MU-MIMO 802.11ac technology is perfect for busy environments: it doubles Wi-Fi performance of Single User MIMO (SU-MIMO) in venues where concurrent wireless access activities are intensive.



4K
ULTRA HD

2200
Mbps



MU-MIMO, all devices at the same time

NBG6815
AC2200 MU-MIMO Dual-Band
Wireless Gigabit Router



Concurrent
Dual-Band



Simple & Quick
Setup



Gigabit LAN



Easy Security
Setup



Smart Network
by StreamBoost™



USB 2.0



ZyXELoneconnect

eaZy123 provides a quick, easy guided setup

The mobile-friendly setup wizard guides you through the home network setup process in 3 simple steps.



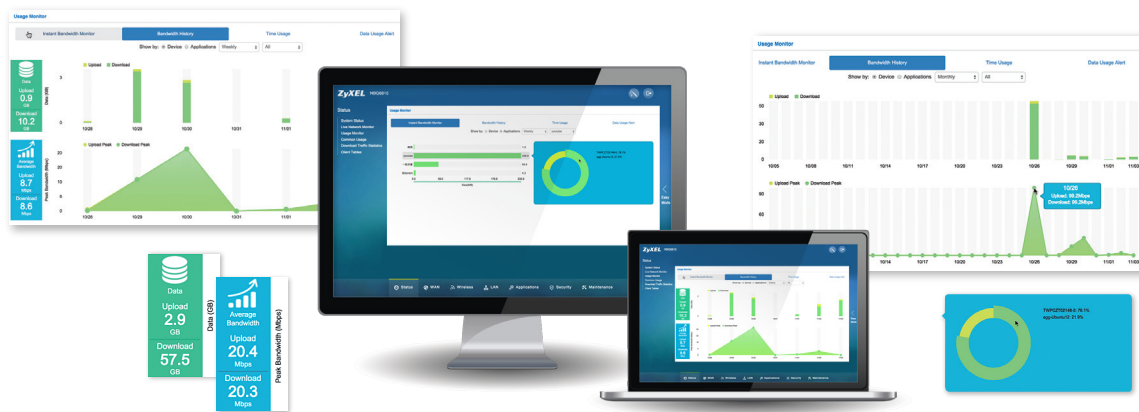
ZyXEL ONE Connect mobile APP for easy network management

With the ZyXEL ONE Connect, you can easily configure network settings from your router to connected network devices, and manage them easily with ZyXEL ONE Connect APP installed.



Monitor usage of your home network easily

The Usage Monitor allows you to view the home network bandwidth consumed by applications or clients. You can set a warning threshold for Internet plan utilization to receive a system message once the limit is reached.



StreamBoost™ provides smooth video playback and lag-free online gaming experience

The ZyXEL NBG6815 allocates the right amount of bandwidth to each networked devices automatically with StreamBoost™ technology. Play an intense online multiplayer game, watch high-definition streamed movies, browse your social networks, download a large file or do even more – all at the same time without experiencing any performance drop.



No QoS, no priority, everyone is waiting



Smart QoS prioritizes applications for best experience

Specifications

System Specifications

Wireless Standard

- 802.11 b/g/n 2.4 GHz
- 802.11 a/n/ac 5 GHz

Wireless Speed

- Transmit:
 - 450 Mbps* for 2.4 GHz
 - 1733 Mbps* for 5 GHz
- Receive:
 - 450 Mbps* for 2.4 GHz
 - 1733 Mbps* for 5 GHz

Wireless Security

- WPA/WPA2, WPA-PSK/WPA2-PSK

Wireless Features

- Guest Wi-Fi
- Wi-Fi Protected Setup (WPS)
- Wi-Fi Multimedia (WMM)
- Auto channel selection
- Wireless scheduling
- Wireless output power management
- MAC address filtering

Routing

- Network Address Translation (NAT)
- WAN type: Static IP, DHCP, PPPoE
- DHCP server/client
- IGMP v1/v2
- Dynamic DNS
- Auto-IP change
- IPv6

VPN Pass-through

- IPSec/PPTP/L2TP

Firewall

- Stateful Packet Inspection (SPI)
- Deny of Service (DOS) prevention

Application Control

- Usage monitor
- Smart QoS (StreamBoost™)
- Parental control
- ZyXEL ONE Connect

USB Support

- Mass storage support by SMB/CIFS/FTP
- Print server

Media Server

- DLNA

System Management

- Online firmware upgrade
- Remote management
- Wake on LAN
- UPnP

Operation Mode

- Router mode
- Access point mode

Hardware Specifications

- CPU: 700 MHz processor
- RAM: 256 Mbytes
- WAN: One 10/100/1000 Mbps Ethernet RJ-45 port with auto MDI/MDIX support
- LAN: Four 10/100/1000 Mbps Ethernet RJ-45 ports with auto MDI/MDIX support
- USB: Two USB 2.0 ports
- Antenna: Internal antennas
- LED indicator:
 - Power/SYS
 - WAN
 - Internet
 - WLAN_2.4G
 - WLAN_5G
 - WPS
- Buttons:
 - Power on/off
 - Reset/Restore
 - WPS
 - Wi-Fi on/off
 - LED on/off
- Power: 12 V DC, 3 A
- Power consumption: 30 W

Physical Specifications

- Item dimensions (WxDxH): 260.4 x 182 x 81.2 mm (10.25" x 7.17" x 3.2")
- Item weight: 578 g (1.28 lb.)
- Packing dimensions (WxDxH): 321 x 202 x 106 mm (12.64" x 7.95" x 4.18")
- Packing weight: 1388 g (3.06 lb.)

Environmental Specifications

Operating Environment

- Temperature: 0°C to 40°C (32°F to 104°F)
- Humidity: 10% to 90% (Non-condensing)

Storage Environment

- Temperature: -30°C to 70°C (-22°F to 158°F)
- Humidity: 10% to 95% (Non-condensing)

Certification

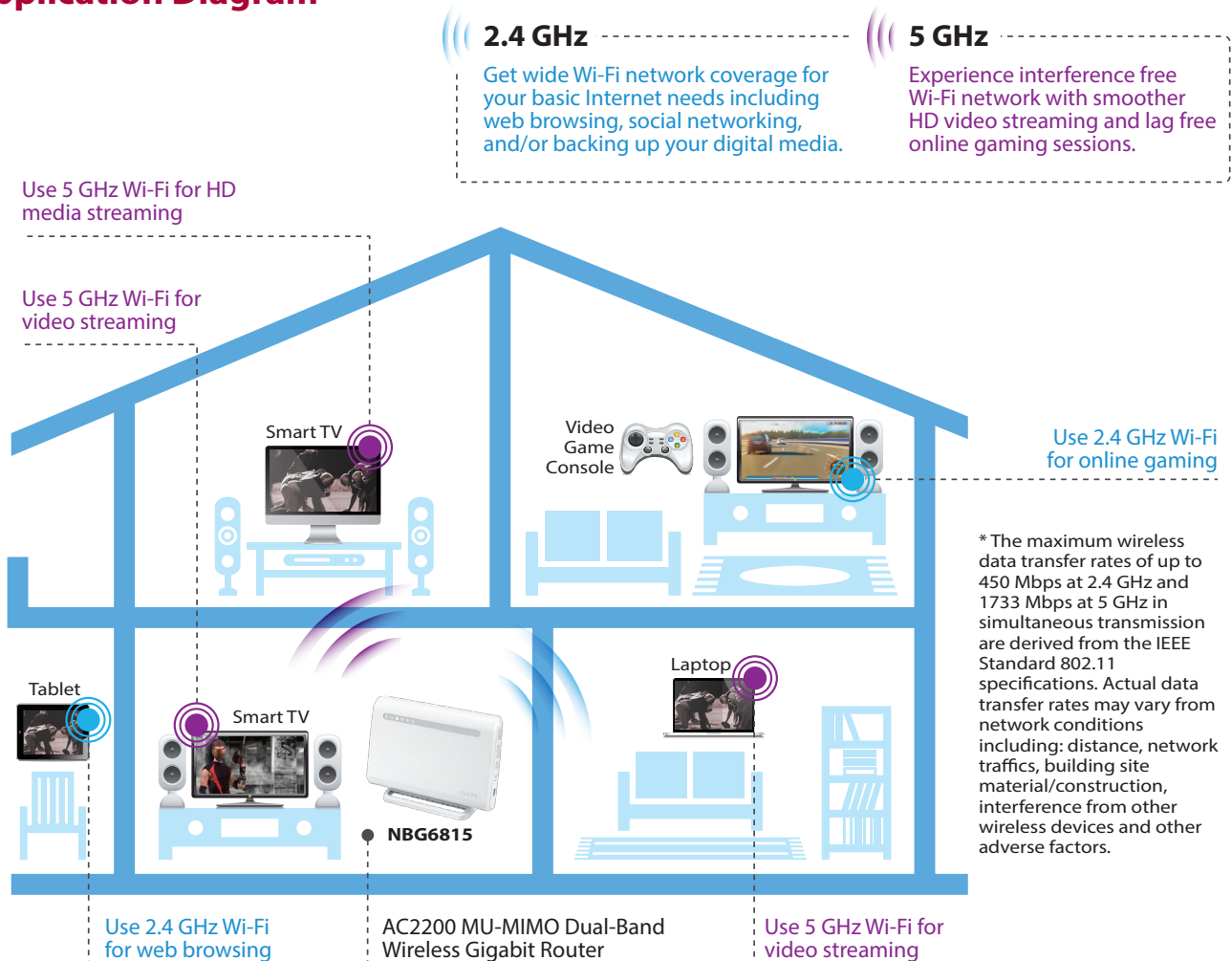
- Safety: CE-LVD
- EMC: CE, FCC

Package Contents

- Wireless router
- Power adapter
- Ethernet cable
- Quick start guide
- Warranty card

*The maximum wireless data transfer rates of up to 450 Mbps at 2.4 GHz and 1733 Mbps at 5 GHz in simultaneous transmission are derived from the IEEE Standard 802.11 specifications. Actual data transfer rates may vary from network conditions including: distance, network traffics, building site material/construction, interference from other wireless devices and other adverse factors.

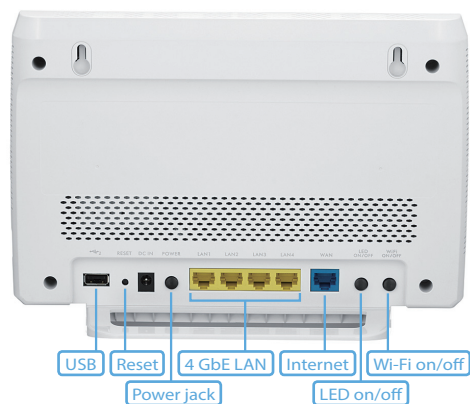
Application Diagram



Front Panel



Rear Panel



For more product information, visit us on the web at www.ZyXEL.com

