

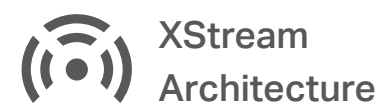


AC 5400 Wireless Tri-Band MU-MIMO Gigabit Router

The Fastest Wi-Fi for
All Your Devices



Archer C5400



XStream
Architecture



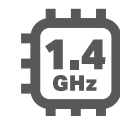
MU-MIMO
Technology



Smart
Connect



NitroQAM™
(1024QAM)

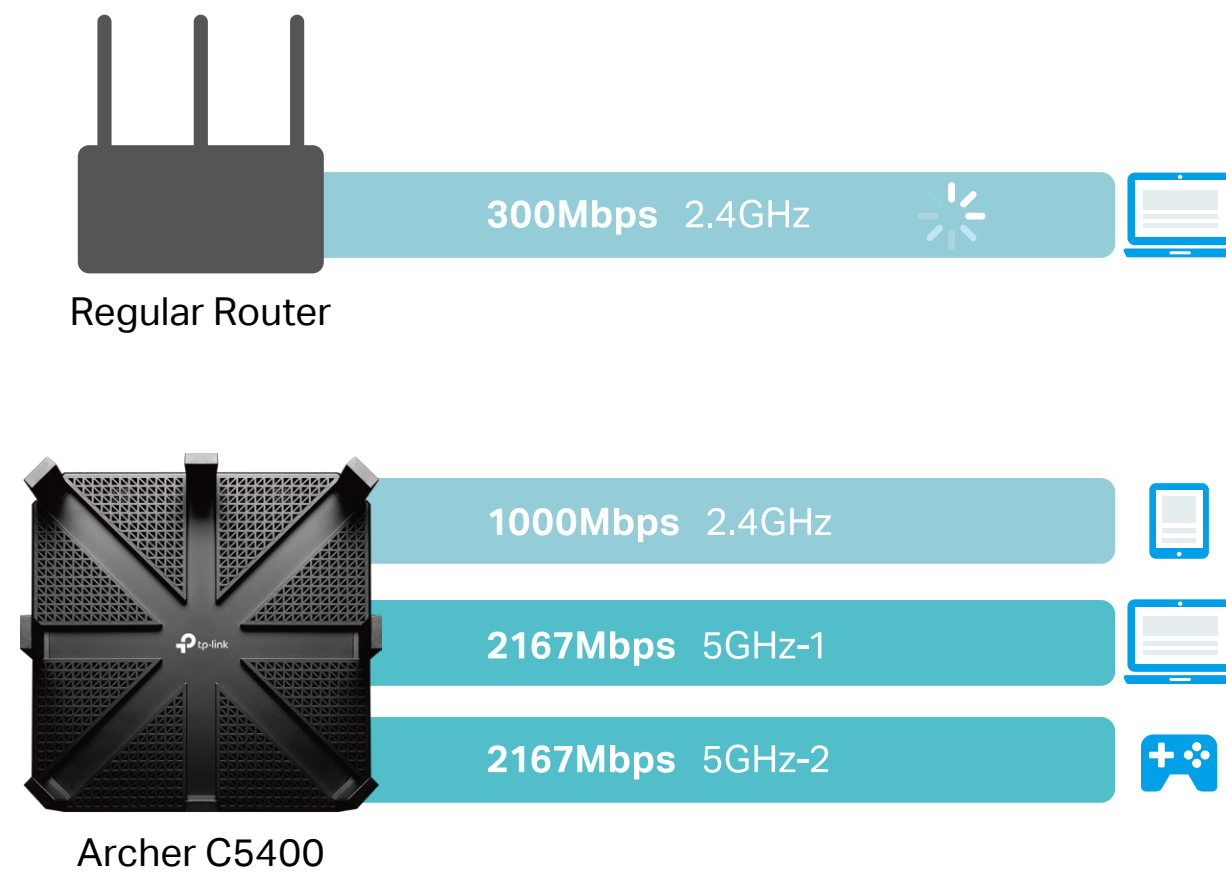


1.4GHz
Dual-Core CPU

Highlights

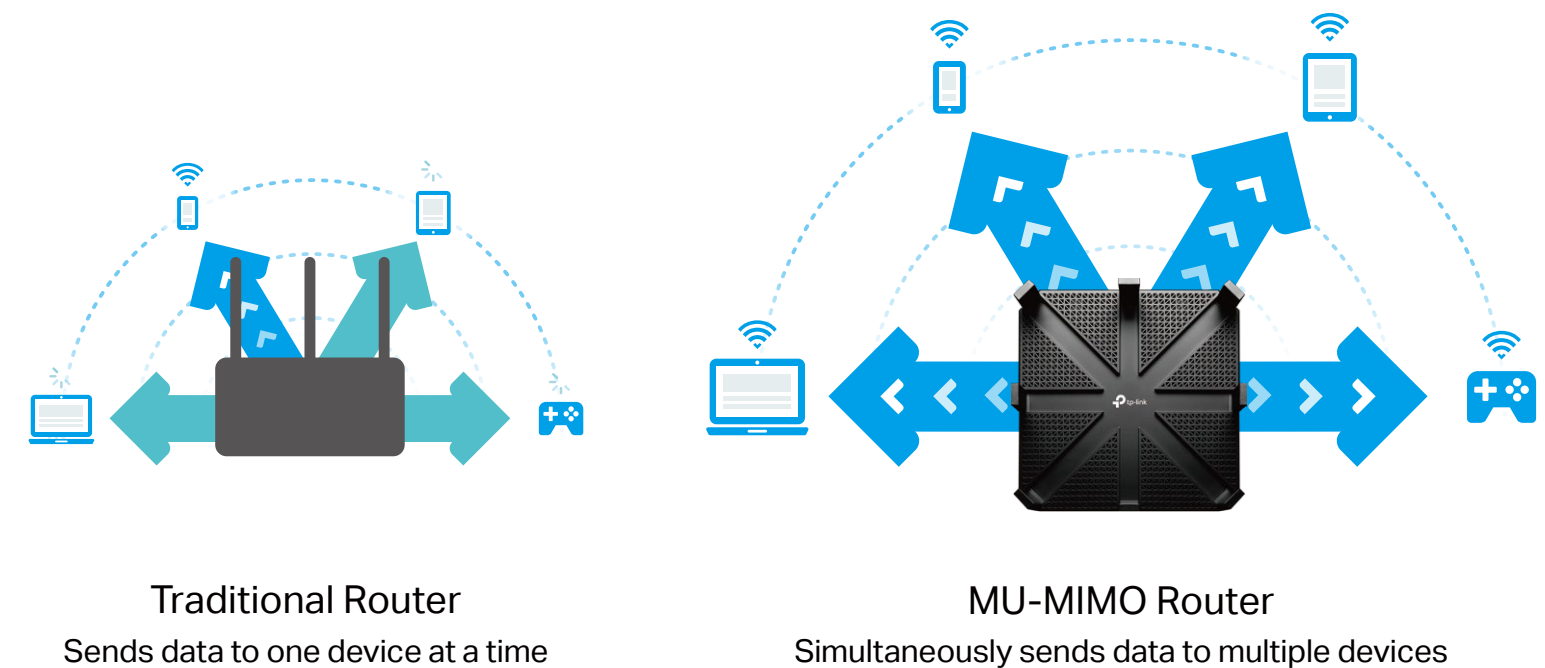
XStream Architecture for Powerful Processing

With XStream architecture, the Archer C5400 adds a dedicated processor for each band to manage Wi-Fi traffic, freeing up the router's 1.4GHz dual-core CPU to tackle more demanding tasks.



MU-MIMO for 4× Faster Connections

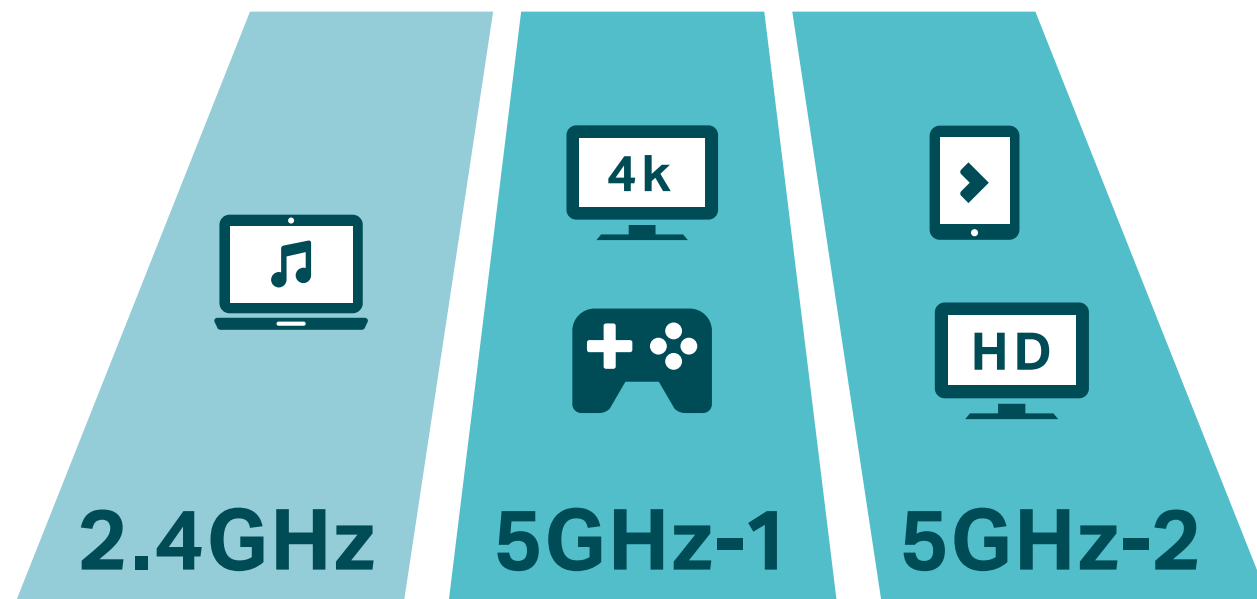
MU-MIMO technology serves up to four devices at once, reducing wait time, increasing Wi-Fi throughput for every device, and making each stream more efficient.



Highlights

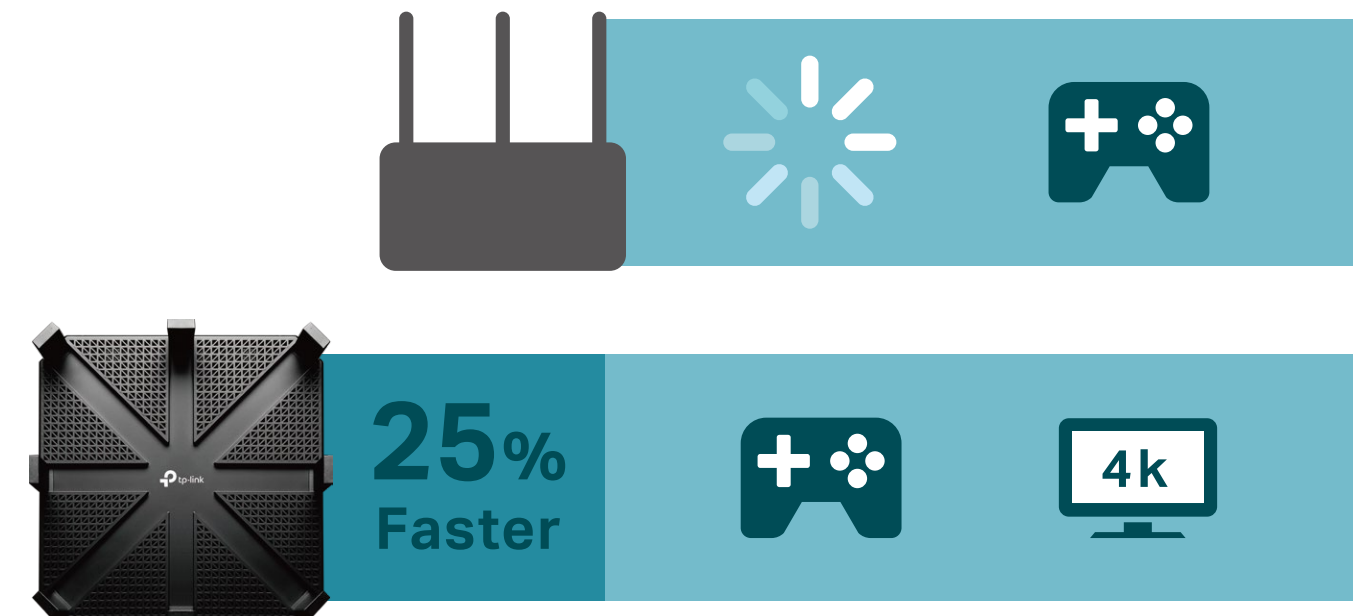
Smart Connect for Better Connections

Smart Connect technology surveys the Wi-Fi environment to intelligently assign devices to the best available band, balancing the network load to give each device optimum connection and throughput.



NitroQAM™ Powered by Broadcom

Break the Wi-Fi speed limit of previous generation routers with NitroQAM™ (1024QAM), boosting speeds on all Wi-Fi bands by 25% to significantly improve performance.

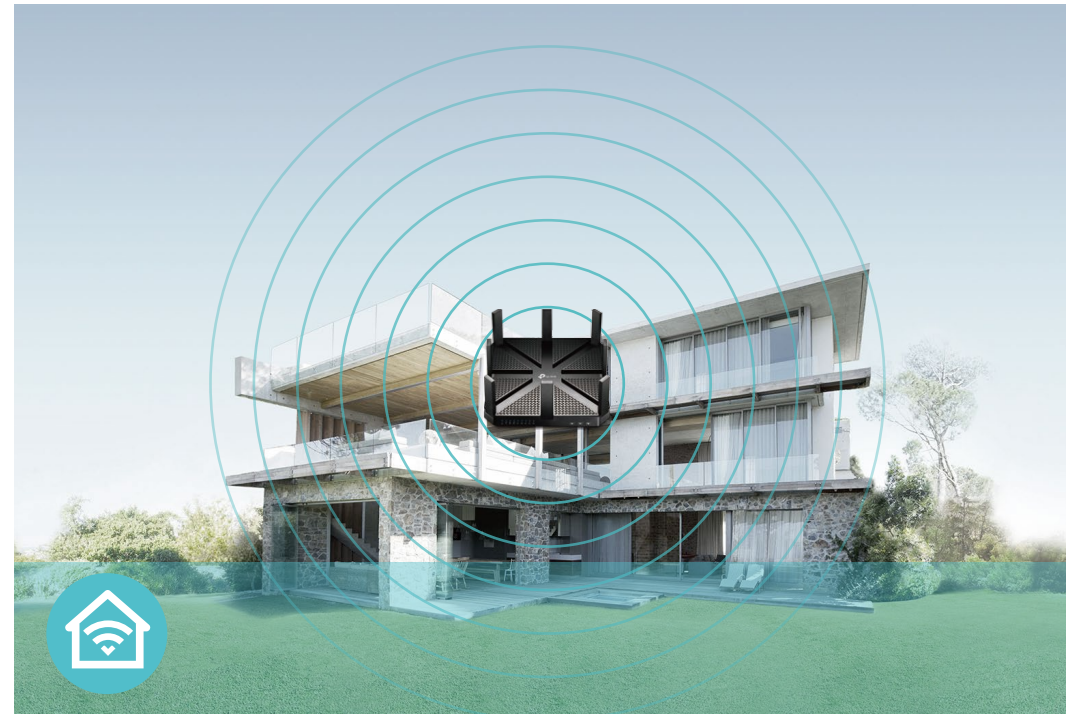


Features



Speed

- **Ultimate Wireless Speed** – Combined wireless speeds up to 1000 (over 2.4GHz) and 4334 (over 5GHz) Mbps
- **NitroQAM Technology** – Use NitroQAM(1024- QAM) modulation scheme for higher data throughput, boosting wireless speeds up to 25%
- **MU-MIMO Technology** – Simultaneously exchanges data with several devices, achieving speeds which are 4x faster than standard AC routers
- **Support 802.11 ac** – Provides a data transfer rate 3 times faster than 802.11n for each stream
- **Dual-core CPU** – 1.4GHz dual-core CPU and 3 co-processors make multi-tasking easy and boost data transfer rate



Wi-Fi Range

- **Ultimate Range Wi-Fi** – 8 dual band high-performance antennas with a high-powered amplifier ensure the widespread Wi-Fi coverage and a stable connection
- **Wi-Fi with Beamforming** – Beamforming technology locates the connected devices and further improves the Archer C5400's range and the signal strength to each mobile device, delivering a more reliable and efficient wireless connection



Reliability

- **Simultaneous Triple Band** – Separate Wi-Fi bands enable more devices to connect to your network without a drop in performance
- **Easy Bandwidth Management** – Advanced QoS makes it easier for you to manage the bandwidth of connected devices
- **Smart Connect Technology** – Dynamic Smart Connect technology automatically selects the optimum band for each device.

Features



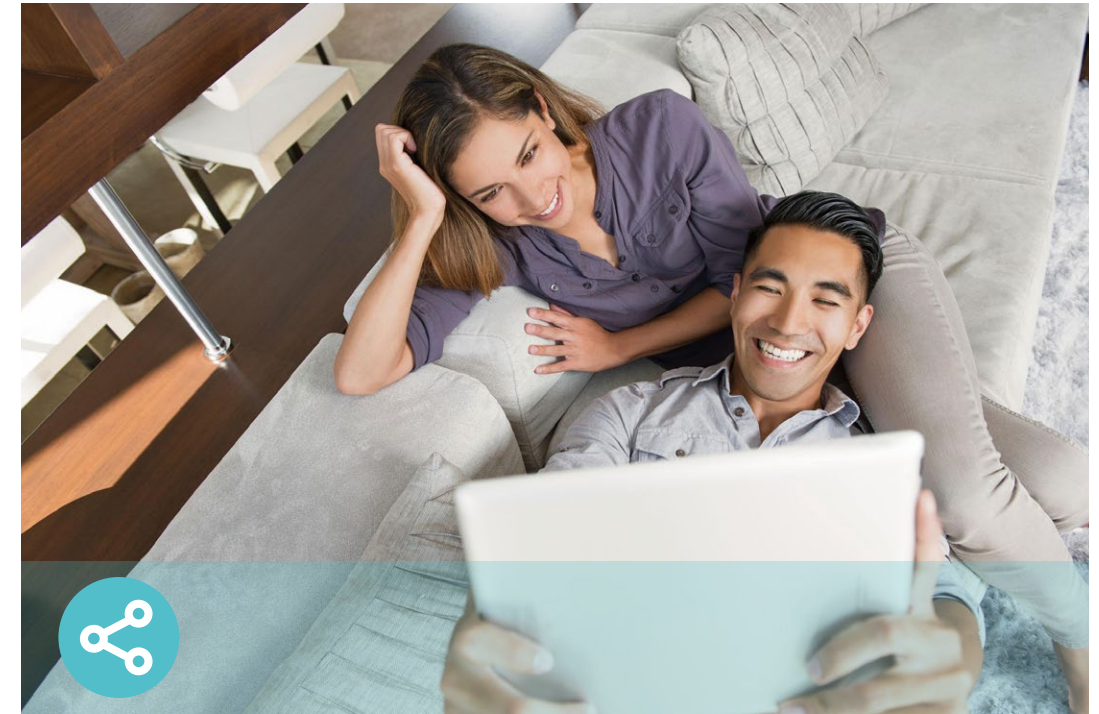
Ease of Use

- Intuitive Web UI – Ensures quick and simple Installation without hassle
- Fast Encryption – One-touch WPA wireless security encryption with the WPS button
- Easy On/Off – Turn on/off wireless radio and LEDs separately using the Wi-Fi On/Off and LED On/Off buttons
- Power On/Off – Conveniently power on or off your router as required
- Hassle-free Management with Tether App – Network management is made easy with the TP-Link Tether App, available on any Android and iOS device



Security

- Guest Network – Keep your main network secure by creating a separate network for friends and visitors
- Access Control – Establish a whitelist or blacklist to allow or restrict certain devices to access the Internet
- Parental Controls – Restrict Internet access time and contents for children devices
- VPN Server – PPTP VPN and OpenVPN are supported, making it easy to set up a secure connection between your private network and the Internet
- Encryptions for Secure Network – WPA-PSK and WPA2-PSK encryptions provide active protection against security threats



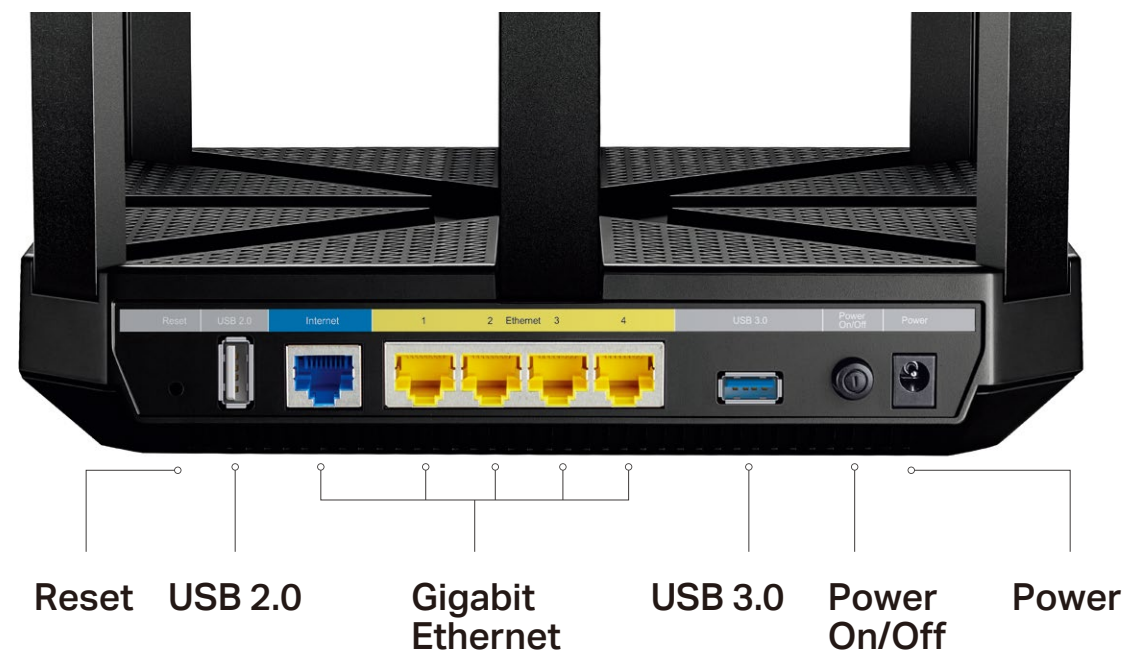
Easy Sharing

- Dual USB Ports for Fast Sharing – With one ultra-fast USB 3.0 port and one USB 2.0 port, you can access and share a printer as well as your files and media locally. Through the router's FTP server, you can also access your files and media from network devices remotely
- 10x Faster Transfer Speed – The USB 3.0 port provides up to 10x faster USB hard drive access than previous generation USB 2.0 connections
- Built-in Print Server – Allows wireless printing from multiple computers (works in conjunction with a USB printer)
- Built-in Media Server – Allows you to play music, watch videos and view photos from any device on your network

Specifications

Hardware

- Ethernet Ports: 4 10/100/1000Mbps LAN Ports, 1 10/100/1000Mbps WAN Port
- USB Ports: 1 USB 3.0 Port, 1 USB 2.0 Port
- Buttons: Wireless On/Off Button, LED On/Off Button, Power On/Off Button, WPS Button, Reset Button
- Antennas: 4 Dual Band Antennas, 4 5GHz antennas
- External Power Supply: 12V/5A
- Dimensions (W x D x H): 9.1×9.1×1.7 in. (230×230×43mm)



Wireless

- Wireless Standards: IEEE 802.11ac/n/a 5GHz, IEEE 802.11b/g/n 2.4GHz
- Frequency: 2.4GHz and 5GHz
- Signal Rate: 2167Mbps at 5GHz-1, 2167Mbps at 5GHz-2, 1000Mbps at 2.4GHz
- Transmit Power:
 - CE: <20dBm(2.4GHz), <23dBm(5.15GHz~5.35GHz); <30dBm(5.47GHz~5.725GHz)
 - FCC: <30dBm(2.4GHz & 5.15GHz~5.25GHz & 5.725GHz~5.825GHz)
- Reception Sensitivity:
 - 5GHz:
 - 11a 6Mbps: -92dBm, 11a 54Mbps: -75dBm
 - 11ac HT20 (MCS8): -68dBm, 11ac HT20 (MCS11): -61dBm
 - 11ac HT40 (MCS9): -63dBm, 11ac HT40 (MCS11): -58dBm
 - 11ac HT80 (MCS9): -60dBm, 11ac HT80 (MCS11): -55dBm
 - 2.4GHz:
 - 11g 54M: -77dBm
 - 11n HT20 (MCS8): -70dBm, 11ac HT20 (MCS11): -63dBm
 - 11ac HT40 (MCS9): -66dBm, 11ac HT40 (MCS11): -61dBm
- Wireless Function: Enable/Disable Wireless Radio, WMM, Wireless Statistics
- Wireless Security: 64/128-bit WEP, WPA/WPA2, WPA-PSK/WPA-PSK2 encryptions

Specifications

Software

- Quality of Service: WMM, Bandwidth Control
- WAN Type: Dynamic IP/Static IP/PPPoE/PPTP(Dual Access)/L2TP(Dual Access)/Bigpond
- Management: Access Control, Local Management, Remote Management
- DHCP: Server, Client, DHCP Client List, Address Reservation
- Port Forwarding: Virtual Server, Port Triggering, UPnP, DMZ
- Dynamic DNS: DynDns, NO-IP
- VPN Server: PPTP, Open VPN
- Access Control: Parental Control, Local Management Control, Host list, Access Schedule, Rule Management
- Firewall Security: DoS, SPI Firewall, IP Address Filter/Domain Filter, IP and MAC Address Binding
- Protocols: Supports IPv4 and IPv6
- USB Sharing: Supports Samba(Storage)/FTP Server/Media Server/Printer Server
- Guest Network: 2.4GHz guest network x 1, 5GHz guest network x 2

Others

- Certification:
CE, FCC, RoHS
- System Requirements:
Microsoft Windows 98SE/NT/2000/XP/Vista™/7/8/8.1/10, MAC OS, NetWare, UNIX or Linux
Internet Explorer 11, Firefox 12.0, Chrome 20.0, Safari 4.0, or other Java-enabled browser
Cable or DSL Modem
Subscription with an Internet Service Provider (for Internet access)
- Environment:
Operating Temperature: 0°C~40°C (32°F ~104°F)
Storage Temperature: -40°C~70°C (-40°F ~158°F)
Operating Humidity: 10%~90% non-condensing
Storage Humidity: 5%~90% non-condensing
- Package Contents
AC5400 Wireless Tri-Band MU-MIMO Gigabit Router Archer C5400
Power Supply Unit
Ethernet Cable
Quick Installation Guide



For more information, please visit

<http://www.tp-link.com/en/products/details/Archer-C5400.html>

or scan the QR code left

Attention: This device may only be used indoors in all EU member states and EFTA countries.

Specifications are subject to change without notice. TP-Link is a registered trademark of TP-Link Technologies Co., Ltd. Other brands and product names are trademarks or registered trademarks of their respective holders. Copyright ©2016 TP-Link Technologies Co., Ltd. All rights reserved.

*NitroQAM™ technology by Broadcom®.

*Maximum wireless transmission rates are the physical rates derived from IEEE Standard 802.11 specifications. Range and coverage specifications are based on test results under normal usage conditions. Actual wireless transmission rate and wireless coverage are not guaranteed, and will vary as a result of 1) environmental factors, including building materials, physical objects and obstacles, 2) network conditions, including local interference, volume and density of traffic, product location, network complexity, and network overhead and 3) client limitations, including rated performance, location, connection quality, and client condition.

*Four or more 1×1 MU-MIMO-enabled client devices must be connected to achieve up to four (4) times faster performance.

www.tp-link.com

TP-Link AC5400 Wireless Tri-Band MU-MIMO Gigabit Router Archer C5400