

# iUAP-AC-LITE

802.11ac Dual-Band Access Point

# iUAP-AC-LITE

## 802.11ac Dual-Band Access Point

---

### Product Introduction

The IEEE 802.11ac Wave 2-compliant iUAP-AC-LITE is a gigabit dual-band ceiling access point. It offers a concurrent data rate as high as of 1167 Mbps. Powered by MU-MIMO technology, a single iUAP-AC-LITE can simultaneously communicate with multiple clients, greatly improving the throughput and bettering user experience. The built-in omni-directional antennas optimize signal radiating directions, broadening the wireless coverage of a single AP. iUAP-AC-LITE can be powered by PoE sourcing equipment that compliant with IEEE 802.3af/at. With its ceiling installation design and sleek appearance, it simplifies wireless networking for enterprises, hotels and other public indoor spaces.



## Key Features

---

- MU-MIMO for high throughput.
- Up to 1167 Mbps dual-band data rate.
- 24V0.5A Passive PoE or IEEE 802.3af/at PoE power supply.
- Range of up to 150 meters.

## Product Features

---



### Gigabit internet connections for ultra-fast experience

Up to 1167 Mbps dual-band data rate, and the Gigabit Ethernet port offers you ultra-fast internet connections.



### IEEE 802.11ac Wave 2 and MU-MIMO

Compliant with IEEE 802.11ac Wave 2 and powered by MU-MIMO technology, a single iUAP-AC-LITE can communicate with multiple wireless clients simultaneously, leading to higher throughput.



### 2.4 GHz and 5 GHz bands for more connected clients

**2.4 GHz and 5 GHz bands for more connected clients**  
The dual-band wireless design allows clients that support 2.4 GHz and/or 5 GHz bands to connect to the AP at the same time, tripling the quantity of connected clients of traditional single-band AP.

## Product Features

---



### Built-in omni-directional antennas

Built-in high-gain omni-directional antennas guarantee a broader and stable coverage.



### Built-in RF optimization

Featuring various anti-interference algorithms, the built-in RF enables iUAP-AC-LITE to evenly allocate bandwidth resources for multiple users, filter interference, and optimize data rate, offering you a guaranteed signal strength and reliable wireless experience.



### VLAN tagging for SSID

iUAP-AC-LITE allows you to set multiple SSIDs and add VLAN tags for SSIDs, thus protecting your network.



### Standard PoE sourcing and DC power supply for easy deployment

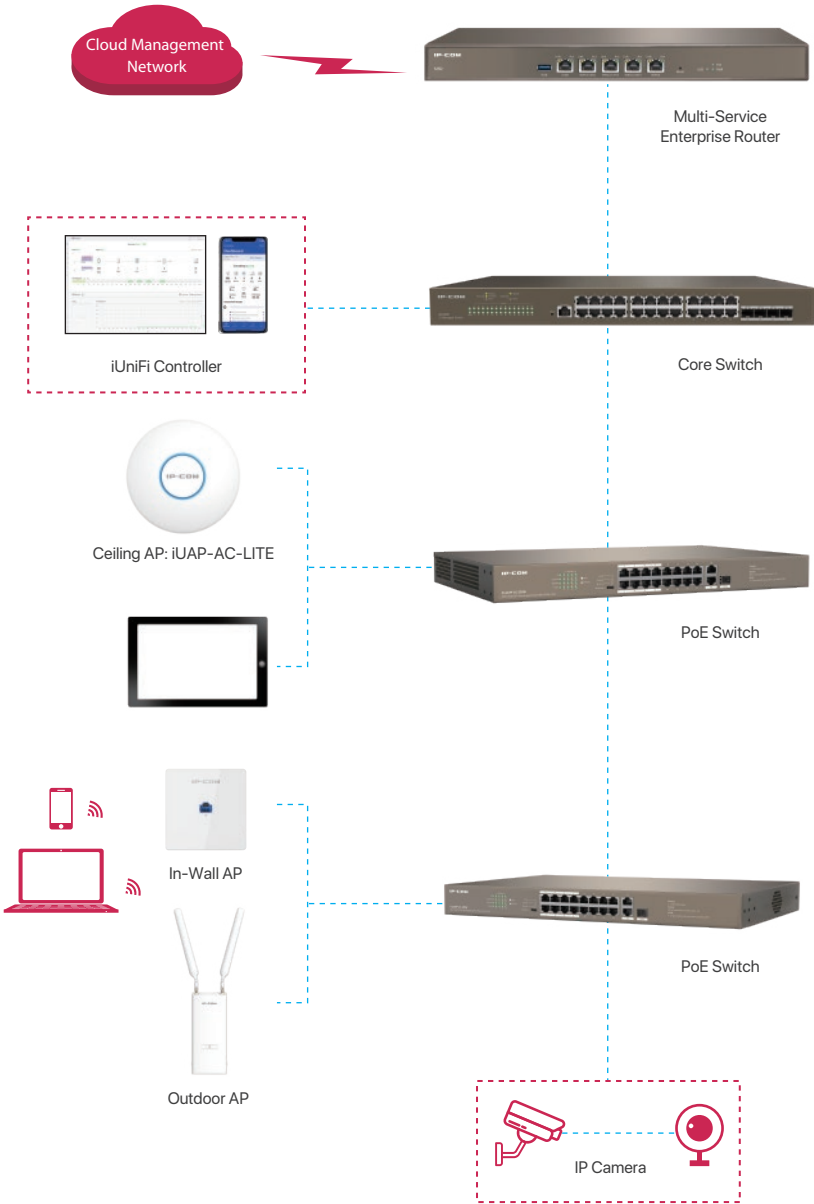
You can use an IEEE 802.3at-compliant PoE sourcing equipment, or a 24V DC power adapter to power on iUAP-AC-LITE.



### Centralized management

The iUniFi Controller makes it easy to manage and monitor the whole iUniFi devices in a real-time manner and cloud services enable a remote and secure access free from the restrictions of device location.

# Application Scenarios



## Packaging

Product Information	
Model	iUAP-AC-LITE
Appearance	Ceiling
Dimensions	176* 176* 43.5mm
Hardware Specifications	
Frequency band	2.4 GHz, 5 GHz
Wireless standards	IEEE 802.11a, IEEE 802.11b, IEEE 802.11g, IEEE 802.11n, IEEE 802.11ac
2.4 GHz data rate	1 - 300 Mbps
5 GHz data rate	6 - 867 Mbps
Ethernet port	1*10/100/1000 Base-TX port
Button	1*Reset
LED indicator	1*Power
Max. power consumption	Full-load 11.5W
Power supply standard	IEEE 802.3at & 24V, 0.5A Passive PoE
Antenna gain	2*4 dBi
2.4 GHz Max. output power	26+/- 1.5 dBm
5 GHz Max. output power	26 +/-1.5 dBm
802.11b RX sensitivity	-93 dBm
2.4 GHz 802.11n (MCS7) RX sensitivity	-72 dBm
5 GHz 802.11a RX sensitivity	-93 dBm
5 GHz 802.11n (MCS7) RX sensitivity	-74 dBm
Software Specifications	
Operating modes	AP, Client+AP
Hide SSID	Supported
Max. No. of SSID	2.4 GHz: 8, 5 GHz: 4
Max. connected clients	2.4 GHz: 128, 5 GHz: 256
WEP	Supported
WPA-PSK	AES/TKIP
WPA2-PSK	AES/TKIP
WPA	Supported
WPA2	Supported

## Packaging

Access control	MAC address-based
Adjustable power transmit	Supported
Frequency analysis	Supported
AP isolation	Supported
Connected clients control	Supported
RSSI threshold	Supported
Transmission Power	Adjustable power by 1dBm
WMM	Supported
VLAN tagging for SSID	Supported
LED indicator control	Supported
Diagnostics tool	Ping, Traceroute
Scheduled reboot	Supported
Reboot at specified interval	Supported
Management	Web UI
System logs	Supported
Firmware upgrade	Local and AC upgrade
Reboot	Local and AC reboot
Reset	Local and AC reset
Backup configuration	Supported
Restore configuration	Supported
<b>Operating Environment</b>	
Default login IP address	192.168.0.254
Default user name	admin
Default password	admin
Operating temperature	-10°C - 45°C
Operating humidity	(10%-90%) RH, non-condensing
Storage temperature	-30°C - 70°C
Storage humidity	(10%-90%) RH, non-condensing



**IP-COM NETWORKS CO., LTD.**

Tower E3, No.1001, Zhongshanyuan Road,  
Nanshan District, Shenzhen, China. 518052  
Service: [info@ip-com.com.cn](mailto:info@ip-com.com.cn)  
Inquiry: [marketing@ip-com.com.cn](mailto:marketing@ip-com.com.cn)  
Tel: +86-755-27653089